

Data Sheet

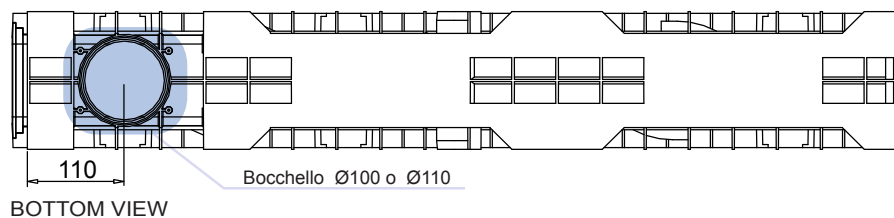
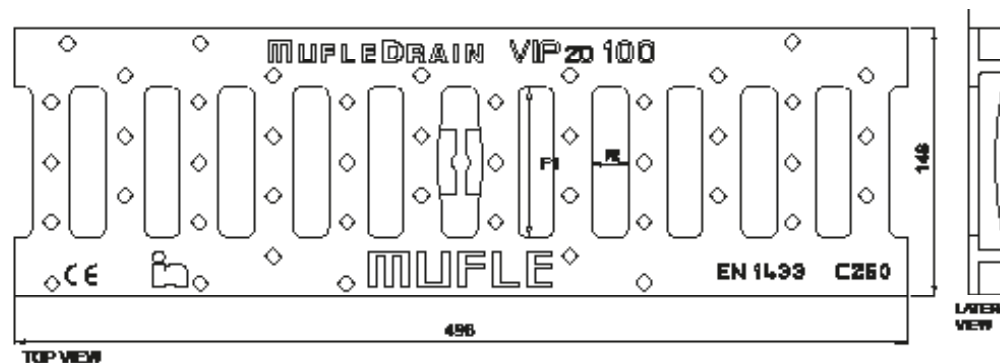
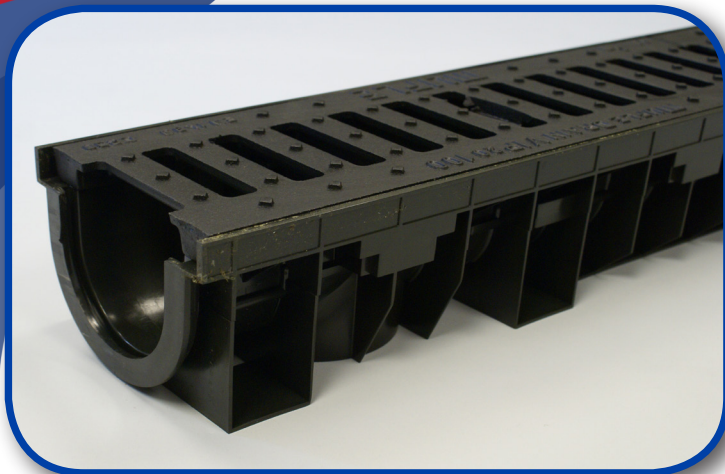
C250 Standard Ductile Iron



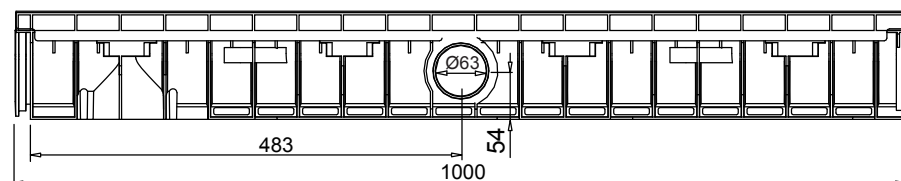
Class C250

Application

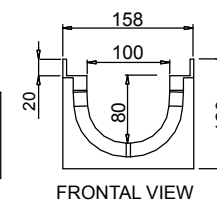
- Parking areas, multilevel parking areas, street side



BOTTOM VIEW



LATERAL VIEW



FRONTAL VIEW

Grating Dimensions

Length (mm)	498
Total width (mm)	148
Total height (mm)	20
Slot height (F1XF2 mm)	91.5 X 6.0
Material	Ductile Iron GJS 500/7 (EN 1563)
Weight (kg)	3.60
Draining surface (dm ²)	2.10
Fixing system	Tie rod
Surface finishing	Epoxy paint
Resistance (Norm UNI EN 1433)	Class C250