

## Data Sheet

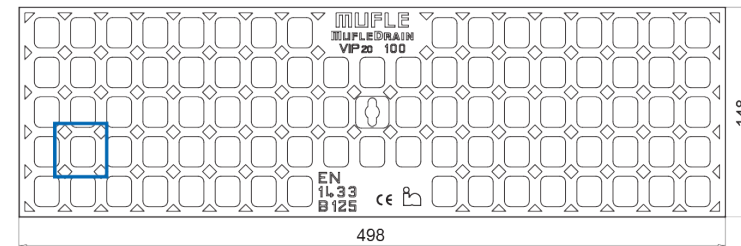
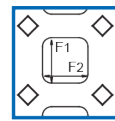
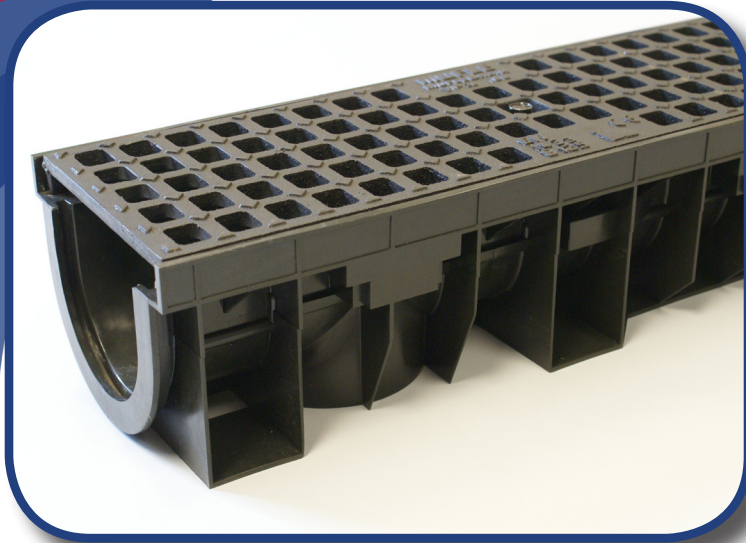
## VIP 100/80 B125 Ductile Iron Wing



Class B125

### Application

- Lay-bys, Pavements and Private Carparks



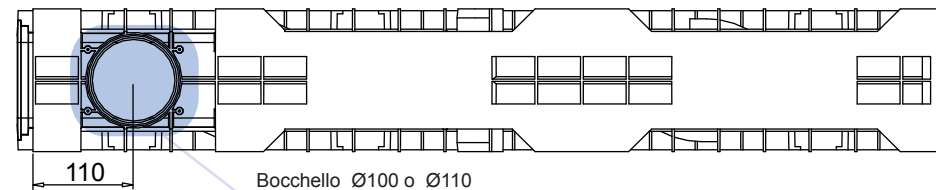
SLOT DETAIL

VIEW FROM ABOVE

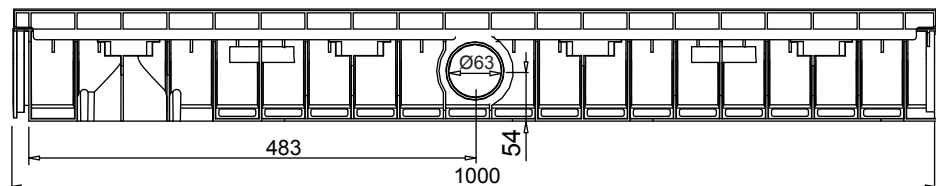
SIDE VIEW

### Grating Dimension

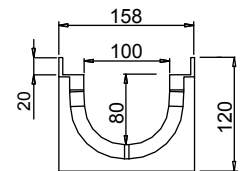
Length (mm)	498
Total width (mm)	148
Total height (mm)	25
Slot height (F1XF2 mm)	82 X 20
Material	Ductile Iron GJS 500/7 (EN 1563)
Weight (kg)	4.75
Draining surface (dm <sup>2</sup> )	1.94
Fixing system	Tie rod - Screw
Surface finishing	Epoxy paint
Resistance (Norm UNI EN 1433)	Class B125



BOTTOM VIEW



LATERAL VIEW



FRONTAL VIEW