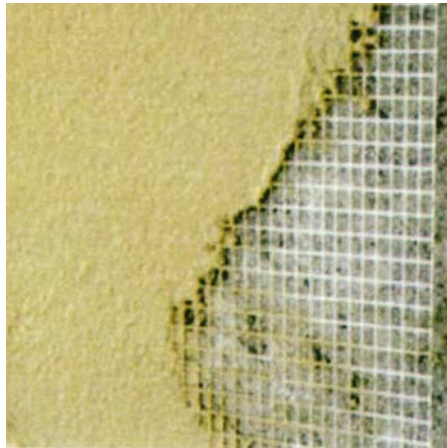


## Data Sheet

## Alkaline Resistant Render Mesh



### Description

A reinforcing mesh which is made from woven fibreglass yarns and coated with an alkaline resistant latex. This coating prevents the alkaline present in cements from degrading the glass fibre, resulting in reduced strength.

<b>Roll Length</b>	<b>1m x 50m</b>
<b>Mesh size</b>	<b>4mm x 4mm</b>
<b>Weight</b>	<b>160g/m<sup>2</sup></b>
<b>Colour</b>	<b>White</b>

### Intended Use

- The mesh is ideal for use in construction and is mainly used to reinforce concrete, cement, screeds, renders and plasters.
- It is an ideal reinforcement for render, even where cracking can be seen and allows previously uneven masonry substrates to be rendered.

### Application

- The majority of manufactures recommend the placement of meshes to be within the first 50% of the render/ plaster depth. In general, the nearer the mesh to the substrate, the better.

### Storage

- Store rolls in a cool, dry location; Store away from direct contact with the ground or concrete; Store out of direct sunlight; Protect rolls from the weather and other damage; Store individual rolls or roll cases on end.

Principal Building Products Ltd, Barbot Hall Industrial Estate,  
Mangham Road, Rotherham, S61 4RJ. Telephone: 01709 728150  
Email: sales@pbpltd.co.uk

